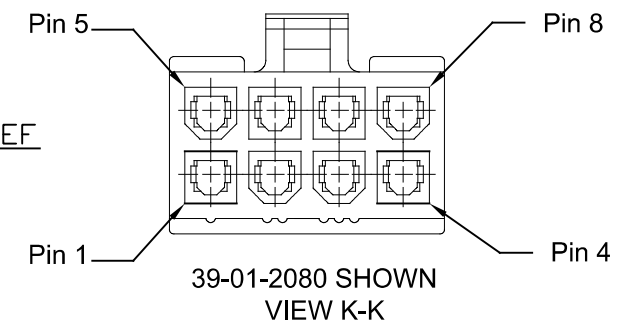
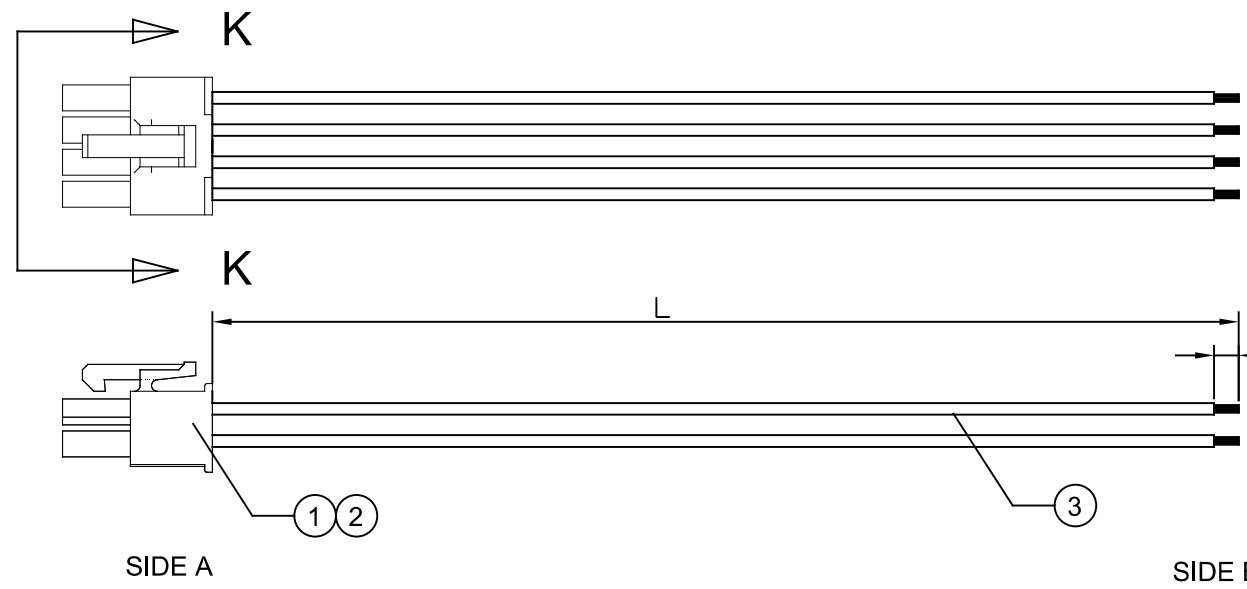


REV.	CHANG DESCRIPTION	BY	DATE
A	NEW RELEASE	MW	25/12/10



CONBEONE P/N	L(MM)	TOLERANCE	HOUSING
CB020703-021	100	±6	39-01-2020
CB020703-022	200	±6	39-01-2020
CB020703-023	300	±8	39-01-2020
CB020703-024	500	±10	39-01-2020
CB020703-025	1000	±10	39-01-2020
CB020703-026	150	±10	39-01-2020
CB020703-027	700	±10	39-01-2020
CB020703-041	100	±6	39-01-2040
CB020703-042	200	±6	39-01-2040
CB020703-043	300	±8	39-01-2040
CB020703-044	500	±10	39-01-2040
CB020703-045	1000	±10	39-01-2040
CB020703-046	150	±10	39-01-2040
CB020703-047	700	±10	39-01-2040
CB020703-061	100	±6	39-01-2060
CB020703-062	200	±6	39-01-2060
CB020703-063	300	±8	39-01-2060
CB020703-064	500	±10	39-01-2060
CB020703-065	1000	±10	39-01-2060
CB020703-066	150	±10	39-01-2060
CB020703-067	700	±10	39-01-2060
CB020703-081	100	±6	39-01-2080
CB020703-082	200	±6	39-01-2080
CB020703-083	300	±8	39-01-2080
CB020703-084	500	±10	39-01-2080
CB020703-085	1000	±10	39-01-2080
CB020703-086	150	±10	39-01-2080
CB020703-087	700	±10	39-01-2080

CONBEONE P/N	L(MM)	TOLERANCE	WIRE COLOR
CB020703-101	100	±6	39-01-2100
CB020703-102	200	±6	39-01-2100
CB020703-103	300	±8	39-01-2100
CB020703-104	500	±10	39-01-2100
CB020703-105	1000	±10	39-01-2100
CB020703-106	150	±10	39-01-2100
CB020703-107	700	±10	39-01-2100
CB020703-121	100	±6	39-01-2120
CB020703-122	200	±6	39-01-2120
CB020703-123	300	±8	39-01-2120
CB020703-124	500	±10	39-01-2120
CB020703-125	1000	±10	39-01-2120
CB020703-126	150	±10	39-01-2120
CB020703-127	700	±10	39-01-2120
CB020703-141	100	±6	39-01-2140
CB020703-142	200	±6	39-01-2140
CB020703-143	300	±8	39-01-2140
CB020703-144	500	±10	39-01-2140
CB020703-150	1000	±10	39-01-2140
CB020703-146	150	±10	39-01-2140
CB020703-147	700	±10	39-01-2140
CB020703-161	100	±6	39-01-2160
CB020703-162	200	±6	39-01-2160
CB020703-163	300	±8	39-01-2160
CB020703-164	500	±10	39-01-2160
CB020703-165	1000	±10	39-01-2160
CB020703-166	150	±10	39-01-2160
CB020703-167	700	±10	39-01-2160

CONBEONE P/N	L(MM)	TOLERANCE	WIRE COLOR
CB020703-181	100	±6	39-01-2180
CB020703-182	200	±6	39-01-2180
CB020703-183	300	±8	39-01-2180
CB020703-184	500	±10	39-01-2180
CB020703-185	1000	±10	39-01-2180
CB020703-186	150	±10	39-01-2180
CB020703-187	700	±10	39-01-2180
CB020703-201	100	±6	39-01-2200
CB020703-202	200	±6	39-01-2200
CB020703-203	300	±8	39-01-2200
CB020703-204	500	±10	39-01-2200
CB020703-205	1000	±10	39-01-2200
CB020703-206	150	±10	39-01-2200
CB020703-207	700	±10	39-01-2200
CB020703-221	100	±6	39-01-2220
CB020703-222	200	±6	39-01-2220
CB020703-223	300	±8	39-01-2220
CB020703-224	500	±10	39-01-2220
CB020703-225	1000	±10	39-01-2220
CB020703-226	150	±10	39-01-2220
CB020703-227	700	±10	39-01-2220
CB020703-241	100	±6	39-01-2240
CB020703-242	200	±6	39-01-2240
CB020703-243	300	±8	39-01-2240
CB020703-244	500	±10	39-01-2240
CB020703-245	1000	±10	39-01-2240
CB020703-246	150	±10	39-01-2240
CB020703-247	700	±10	39-01-2240

WIRE CHART:

SIDE A	SIDE B	HOUSING P/N
PIN 1	BLACK OPEN	39-01-2020
PIN 2	BLACK OPEN	39-01-2040
PIN 3	BLACK OPEN	39-01-2060
PIN 4	BLACK OPEN	39-01-2080
PIN 5	BLACK OPEN	39-01-2100
PIN 6	BLACK OPEN	39-01-2120
PIN 7	BLACK OPEN	39-01-2140
PIN 8	BLACK OPEN	39-01-2160
PIN 9	BLACK OPEN	39-01-2180
PIN 10	BLACK OPEN	39-01-2200
PIN 11	BLACK OPEN	39-01-2220
PIN 12	BLACK OPEN	39-01-2240
PIN 13	BLACK OPEN	39-01-2260
PIN 14	BLACK OPEN	39-01-2280
PIN 15	BLACK OPEN	39-01-2300
PIN 16	BLACK OPEN	39-01-2320
PIN 17	BLACK OPEN	39-01-2340
PIN 18	BLACK OPEN	39-01-2360
PIN 19	BLACK OPEN	39-01-2380
PIN 20	BLACK OPEN	39-01-2400
PIN 21	BLACK OPEN	39-01-2420
PIN 22	BLACK OPEN	39-01-2440
PIN 23	BLACK OPEN	39-01-2460
PIN 24	BLACK OPEN	39-01-2480

REMARK:

- 1) ROHS 2.0 COMPLIANT.
- 2) MEET IPC-620 SPECIFICATION.
- 3) 100% OPEN/SHORT TEST.

3	AR	M	UL1061 HOOK WIRE, 80°C, 300V, 18AWG, BLACK
2	AR	PCS	4.2mm PITCH FEMALE TERMINAL, TIN PLATED, 18-24awg, MOLEX39000038
1	I	PCS	4.2mm PITCH REC HSG, 2 ROW, xxP, UL94V-2, MOLEX39-01-2XX0
S/N	Q'TY	UNIT	DESCRIPTION
			GENERAL TOLERANCE UNLESS SPECIFIED: 1) PLC ±1.27 2) PLC ±0.50 3) PLC ±0.13 4) PLC ±0.002 ANGLES 45°
		APPROVED	P/N:
		RW	SEE TABLE
		CHECKED	DOC#
		CT	SD-CB020703
		DRAWN	CUSTOMER COPY
		MW	
			<b>CONBEONE</b> www.conbeone.com
			TITLE: Molex 4.2mm Mini Fit Wire Harness 5557 Series, Single End, DBSE-V2
SIZE	UNIT	SCALE	PAGE
A4	MM	N.T.S	1 OF 1
			REV A

THIS DRAWING IS A CONTROLLED DOCUMENT FOR DONGGUAN CONBEONE TECHNOLOGY CO., LTD. IT IS SUBJECT TO CHANGE AND THE SEMPER ENGINEERING CONTROLLING ORGANIZATION SHOULD BE CONTACTED FOR LATEST REVISION.