

2.50mm Wire Harness

JST NH Series

2.50mm Pitch OTS Discrete Wire Harness Based on JST NH Series WTB Connectors

JST's NH series 2.50mm-Pitch Wire-to-Board Connectors provide reliable electrical connection and good cost effective., are frequently used in consumer, industrial etc applications.

OTS Cable type:



Crimped Lead

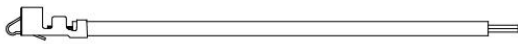


Cable Assembly

Materials:

- Receptacle Housing: HXXP-SHF-AA
- Socket: SHF-001T-0.8BS
- Hook Wire: UL1007 22AWG, 80°C, 300V。
- Wire Color: Black,Red,Yellow, Blue, Orange, Green, White, Gray, Purple, Brown
- Cable Length: 100mm, 200mm, 300mm, 500mm, 1000m

Crimped Lead

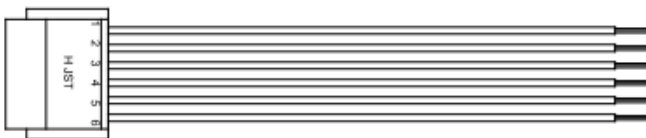


Single End 单头



Dual Ends 双头

Cable Assembly



SINGLE END
单头



DUAL ENDS TYPE A
双头同向



DUAL ENDS TYPE B
双头反向

2.50mm Wire Harness

JST NH Series

东莞市康比旺电子科技有限公司

Dongguan Conbeone Electronics Technology co., Ltd

Order Information:

Crimped Lead:

Gender	Wire Size	Single End	Dual Ends	Wire Color	Terminal
Female	22AWG	CB030169-1XX	CB030169-0XX	Optional	SHF-001T-0.8BS

Cable Ass'y:

NH Series	CKTS	Single End	Dual Ends Type A	Dual Ends Type B	Housing P/N
All Black Wires	2P	CB030036-02*	CB030037-02*	CB030038-02*	H2P-SHF-AA
	3P	CB030036-03*	CB030037-03*	CB030038-03*	H3P-SHF-AA
	4P	CB030036-04*	CB030037-04*	CB030038-04*	H4P-SHF-AA
	5P	CB030036-05*	CB030037-05*	CB030038-05*	H5P-SHF-AA
	6P	CB030036-06*	CB030037-06*	CB030038-06*	H6P-SHF-AA
	7P	CB030036-07*	CB030037-07*	CB030038-07*	H7P-SHF-AA
	8P	CB030036-08*	CB030037-08*	CB030038-08*	H8P-SHF-AA
	9P	CB030036-09*	CB030037-09*	CB030038-09*	H9P-SHF-AA
	10P	CB030036-10*	CB030037-10*	CB030038-10*	H10P-SHF-AA
	11P	CB030036-11*	CB030037-11*	CB030038-11*	H11P-SHF-AA
	12P	CB030036-12*	CB030037-12*	CB030038-12*	H12P-SHF-AA
	13P	CB030036-13*	CB030037-13*	CB030038-13*	H13P-SHF-AA
	14P	CB030036-14*	CB030037-14*	CB030038-14*	H14P-SHF-AA
	15P	CB030036-15*	CB030037-15*	CB030038-15*	H15P-SHF-AA
	16P	CB030036-16*	CB030037-16*	CB030038-16*	H16P-SHF-AA
	18P	CB030036-18*	CB030037-18*	CB030038-18*	H18P-SHF-AA
	20P	CB030036-20*	CB030037-20*	CB030038-20*	H20P-SHF-AA
	21P	CB030036-21*	CB030037-21*	CB030038-21*	H21P-SHF-AA
	22P	CB030036-22*	CB030037-22*	CB030038-22*	H22P-SHF-AA
	24P	CB030036-24*	CB030037-24*	CB030038-24*	H24P-SHF-AA
25P	CB030036-25*	CB030037-25*	CB030038-25*	H25P-SHF-AA	
Colorful Wires	2P	CB030039-02*	CB030040-02*	CB030041-02*	H2P-SHF-AA
	3P	CB030039-03*	CB030040-03*	CB030041-03*	H3P-SHF-AA
	4P	CB030039-04*	CB030040-04*	CB030041-04*	H4P-SHF-AA
	5P	CB030039-05*	CB030040-05*	CB030041-05*	H5P-SHF-AA
	6P	CB030039-06*	CB030040-06*	CB030041-06*	H6P-SHF-AA
	7P	CB030039-07*	CB030040-07*	CB030041-07*	H7P-SHF-AA
	8P	CB030039-08*	CB030040-08*	CB030041-08*	H8P-SHF-AA
	9P	CB030039-09*	CB030040-09*	CB030041-09*	H9P-SHF-AA
	10P	CB030039-10*	CB030040-10*	CB030041-10*	H10P-SHF-AA
	11P	CB030039-11*	CB030040-11*	CB030041-11*	H11P-SHF-AA
	12P	CB030039-12*	CB030040-12*	CB030041-12*	H12P-SHF-AA
	13P	CB030039-13*	CB030040-13*	CB030041-13*	H13P-SHF-AA
	14P	CB030039-14*	CB030040-14*	CB030041-14*	H14P-SHF-AA
	15P	CB030039-15*	CB030040-15*	CB030041-15*	H15P-SHF-AA
	16P	CB030039-16*	CB030040-16*	CB030041-16*	H16P-SHF-AA
	18P	CB030039-18*	CB030040-18*	CB030041-18*	H18P-SHF-AA
	20P	CB030039-20*	CB030040-20*	CB030041-20*	H20P-SHF-AA
	21P	CB030039-21*	CB030040-21*	CB030041-21*	H21P-SHF-AA
	22P	CB030039-22*	CB030040-22*	CB030041-22*	H22P-SHF-AA
	24P	CB030039-24*	CB030040-24*	CB030041-24*	H24P-SHF-AA
25P	CB030039-25*	CB030040-25*	CB030041-25*	H25P-SHF-AA	

Technical support and customization inquire, please contact with:

Roy Wang, +86-13640617500, Roy.Wang@conbeone.com

REV 1.0 2026.03.17